

Principal's Message

Malo e lelei,

The feedback we have been gathering from the students is very clear - *they miss their friends, peers and social interactions*. No surprises there, we as adults probably feel the same!

One question I asked some students on Tuesday (at a zoom meeting) was, "if we were back at school tomorrow, what would be your first request?" Every student's answer had something to do with *Lunchtime*! While there was no mention of curriculum, we do continue to improve our Remote Learning package. The deliberate inclusion of quizzes, challenges, competitions and student/teacher videos seems to help in boosting student engagement.

However, all students are different and if you are finding it difficult to get your child to complete the set work, you are not alone! As we have said in the past, do what works for you and hopefully we are back at school soon.

Please continue to direct students to our Friday morning PPTV shows and check out this interesting initiative – Maori Moment on Tuesday at 12pm.

Regards,

Nick Wilson
Principal

Te Wiki o Te Reo – Maori Moment

Be a world leader and help to set the world record for people speaking and celebrating an endangered, indigenous language at the same time.

Tuesday 14 September – 12pm

<https://www.reomaori.co.nz/>

Sports Updates

Netball Umpiring Courses

Last week some of our netball students enrolled (online) for the first Netball North Harbour Umpiring Theory course for Year 7s to Adults. India Nash, Mila Alomajan, Hana Rylev, Annabelle Imlah and Georgia Marshall have been really enjoying these sessions - just another great way to keep busy during lockdown and learn another perspective of their favourite sport.

If you're keen to be involved in this activity, check out the second Umpiring theory course via Zoom that starts next week over 3 days for an hour each day: 3.30pm – 4.30pm.

Tuesday 14 September 3.30pm - 4.30pm

Wednesday 15 September 3.30pm – 4.30pm

Thursday 16 September 3.30pm – 4.30pm

Cost \$40.00 for the 3 days

Registration is online. Once payment is received a link to the zoom class will be sent to you. Contact Sharon Fraser for any queries sharon@netballnorthharbour.co.nz

Rugby

During lockdown, NZ Rugby have been trialling a programme online 'Black Ferns Creating Connections' showcasing the Black Ferns to schools. Rosa Rieger from Rugby NZ hosts live Zoom sessions for students to talk with the Black Ferns, encouraging them to ask questions and learn more about the players and the sport. We are currently working to include our school into one of the sessions. Here is a brief background on the programme:

- Over the past month, NZ Rugby has been taking Black Fern players back to schools to connect with kids across the country, share their journey and challenges to become a Black Fern and talk about the RWC being played in Aotearoa, for the very first time, in 2022.
- We are thankful to AIG to establish this Black Ferns Creating Connections programme, and with Aotearoa now in lock down we would like to use this opportunity to take this program online and continue to connect and inspire our Tamariki throughout Aotearoa.

Watch the Black Ferns pre video: [Black Ferns Creating Connections video](#)

Well/Being Message

Kiā ora whanau,

We've had a lot go on in our community this year, with Lockdowns and recently the traumatic event that occurred in Countdown Lynn Mall. Some of you may have had loved ones or been impacted directly by this. Please see this week's special report on trauma to guide you in conversations that have arisen, or may come up.

As always we are here to support, please contact rachelm-s@ponsint.school.nz our Guidance Counsellor.

Special report: Trauma

Children and teens will experience events during their lives that will affect them emotionally and physically. Traumatic events do affect children and teens differently, depending on their age, personality and past experiences.

How a parent or caregiver reacts to an event, will impact on the child's ability to cope and recover. Trauma can affect children in many ways and result in strong feelings of fear, sadness, guilt, anger or grief, making it difficult for them to cope with everyday life.

A distressing or frightening experience can challenge a child's sense of security and predictability of their world. Children will look to the adults in their lives to help them better understand a traumatic event. It is therefore important for these adult role models to 'tune in' to a child's fears and provide them with the comfort and support they need.

Link to School TV:

<https://ponsonbyintermediate.nz.schooltv.me/newsletter/trauma>

High School Enrolment – Year 8 Students

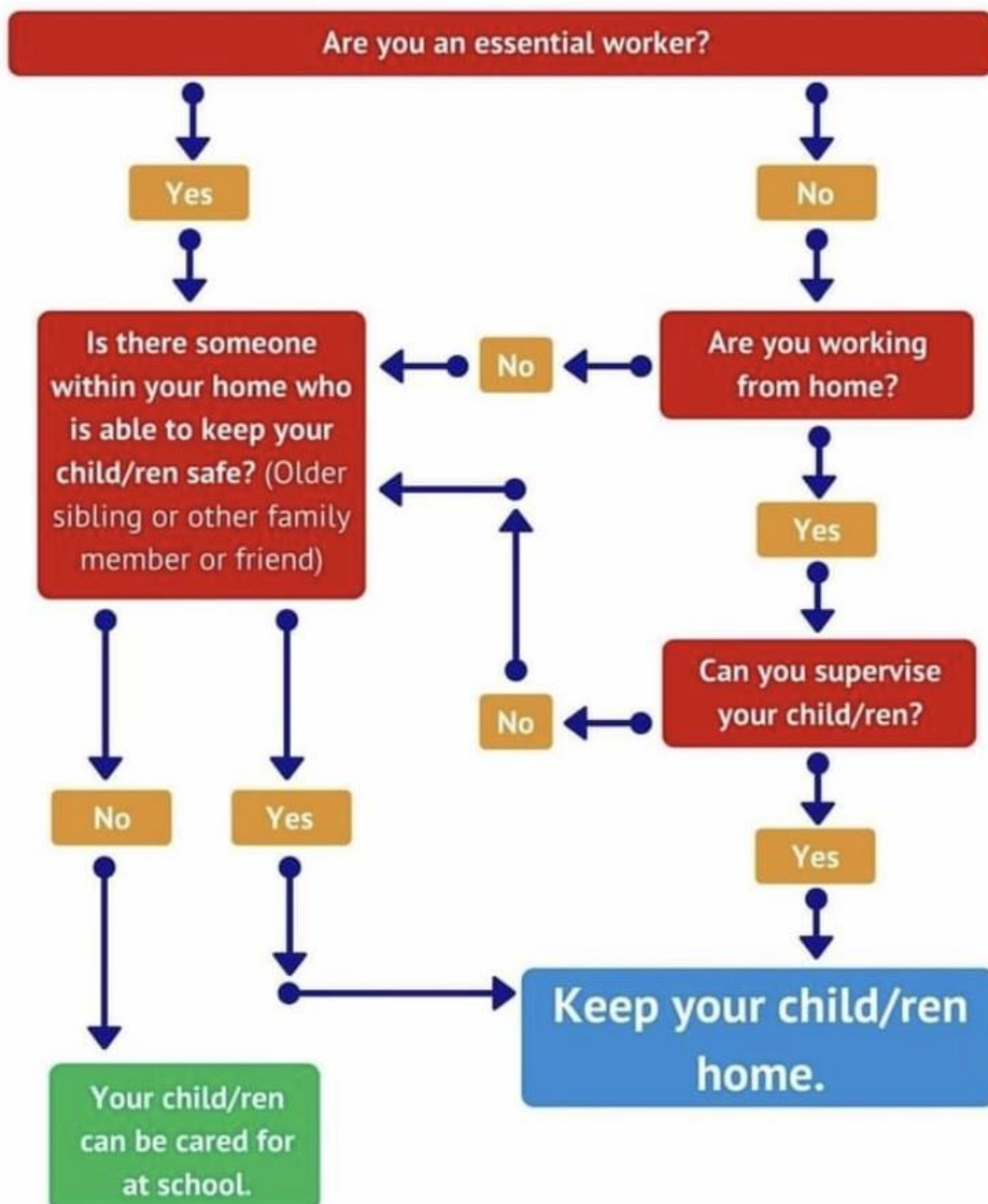
We know there is a lot going on for families at the moment but we just wanted to take this time to give you a friendly reminder to make sure you are enrolling your child in a high school for 2022.

In Term 4, we assist with transitioning year 8 students on to high school and this is much easier when we know which high school they will be attending.

Alert Level 3 – Checklist

Please consider the guidelines from the Ministry of Education below as we approach Level 3

ALERT LEVEL-3 DECISION FLOWCHART



Ponsonby Learning Pathway

Our Vision

Articulate,
energised achievers;
ready for the future

New Zealand
Curriculum

Ponsonby
Community

At Ponsonby Intermediate we value:

Growth Through Learning

We are open to change, treating each challenge as an opportunity to learn. As life long learners we strive to be the best we can be.

Expressing Ourselves

We explore and share our thoughts, talents, feelings and beliefs because these make us who we are. We get the most out of life when we are true to ourselves.

Making Connections:

As a member of a class, a school and a community, we are part of a whole. We come together from many different cultures to learn from each other.

Showing Respect for other People

Because we have confidence in who we are, we are able to appreciate and let others be themselves. We care for, and support each other, inside and outside the classroom.

Personalising Our Path

Habits of Mind • Quality Learning Circle • Te Reo • Gifted and Talented • SMART Target
Learning Journals • Positively Ponsonby • Inquiry Model • Specialist Teaching
Ponsonby Passports • Student Council • Art/Culture Weeks • Direct Vocab
Information Landscape • R.E.E.P. • E.O.T.C. • ESOL • S.S.R. • Options • Camps
B-Cool • Reporting to Parents • Professional Development • Appraisal
Tools for Learning • Planning • Overviews • Curriculum Reviews • Mentoring
Keys to Success • Critical Thinking • Kori • Habits of Mind • SMART Targets

Key Competencies

Mathematics

- Thinking
- Using language symbols and text
- Managing Self

Humanities

- Thinking
- Relating to others
- Managing Self

English

- Thinking
- Using language symbols and text
- Managing Self

The Arts

- Thinking
- Managing Self
- Relating to Others

Technology

- Thinking
- Relating to Others
- Managing Self
- Participating and Contributing